

# THE STATE OF FORESTRY

IN SOUTH CAROLINA



**Scott Phillips**  
STATE FORESTER  
SC Forestry Commission

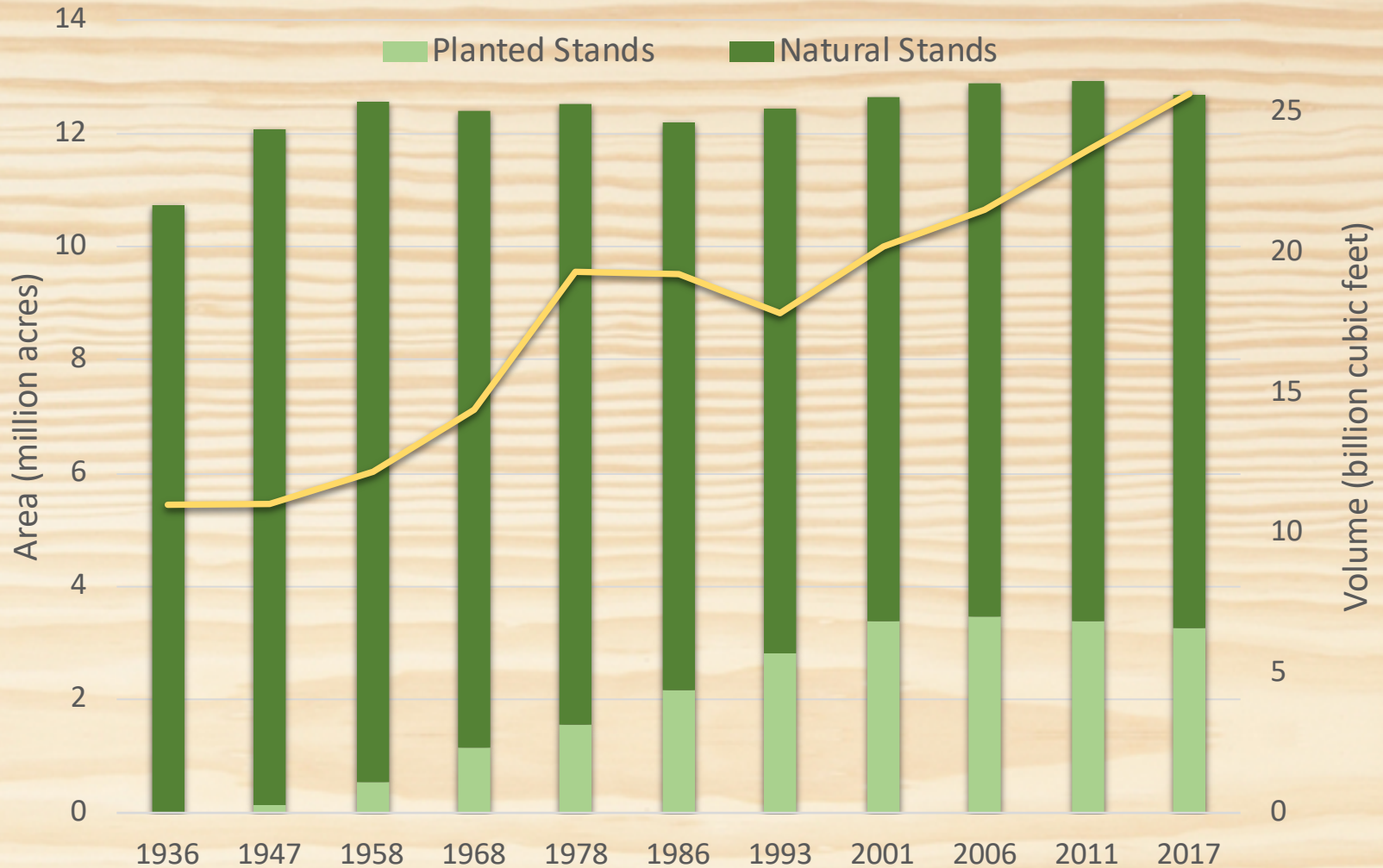
# OUR FORESTS

- 12.9 million acres of forestland
- 67% of SC's land area is forested
- Live-tree volume: 26 billion cubic feet
- 52% hardwood / 48% pine types
- 24% planted pine, produces *>50% of timber supply*
- 87% private / 13% public
- 207,000 family forest owners  
*(86,000 own 10+ acres)*
- Growth exceeds harvest
- Timber volumes at record levels
- Scarcity of pulpwood-sized pine in the coastal plain region



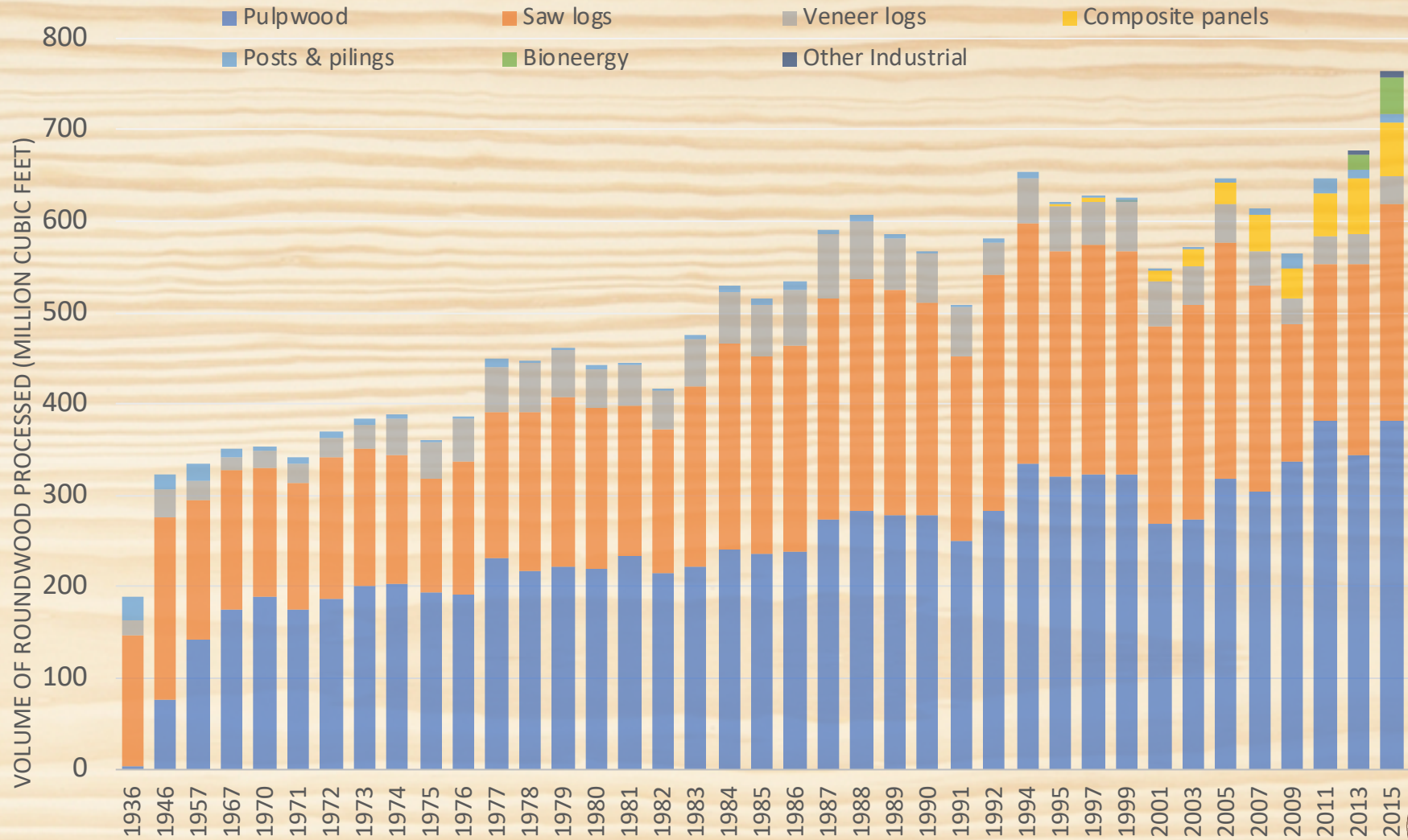
# TIMBER VOLUMES AT RECORD LEVELS

## TIMBERLAND AREA AND LIVE-TREE VOLUME, SOUTH CAROLINA



# DEMAND IS GROWING!

## SOUTH CAROLINA PRODUCTION OF PRIMARY TIMBER PRODUCTS 1936-2015



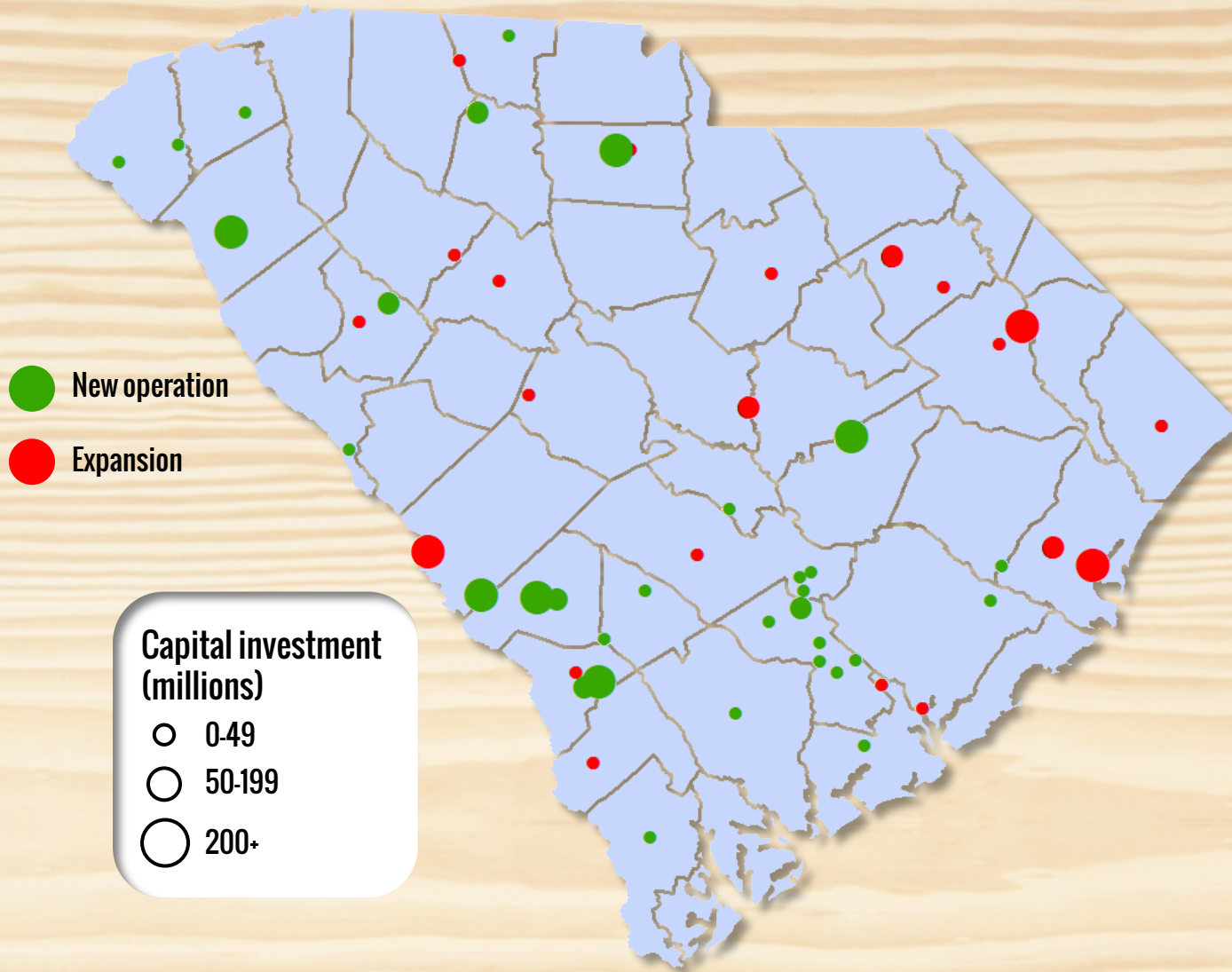
# RECENT ANNOUNCEMENTS/EXPANSIONS

<b>Date</b>	<b>Company</b>	<b>Investment (\$M)</b>	<b>Jobs</b>
Oct 18	GP OSB Mill	\$4.5	0
Aug 18	Interfor	\$40	7
July 18	Jasper Pellet Company	\$8.1	27
Jan 18	Tree Brand Packaging	\$1.3	28
Feb 18	Kapstone Paper & Packaging	\$6	0
Mar 18	Charles Ingram Lumber	\$33	22
Mar 18	Low Country Case & Millwork	\$7	10
May 18	Canfor Southern Pine	\$40	0
May 18	Universal Forest Products	\$6.1	120
Nov 17	WestRock	\$410	0
Sep 17	Collum's Lumber Products	\$2	10

Total capital investment for FY2017-18 – FY2018-19:  
**\$558 million / 224 new jobs**



# RECENT ANNOUNCEMENTS/EXPANSIONS



## From 2004 - present

- 103 forest product announcements
- 17 greenfield mills (11 primary, 6 secondary)
- 10 sawmill expansions/upgrades
- >\$6 billion in capital investment
- >5,600 new jobs

# SC FORESTRY'S ECONOMIC IMPACT

# 21

**BILLION  
DOLLAR  
ECONOMIC IMPACT  
ON SOUTH CAROLINA**



**>84,000 JOBS**



**\$1.3B IN EXPORTS**



**#1 HARVESTED CROP**



**#1 EXPORT COMMODITY**



# HURRICANE FLORENCE

## RESPONSE

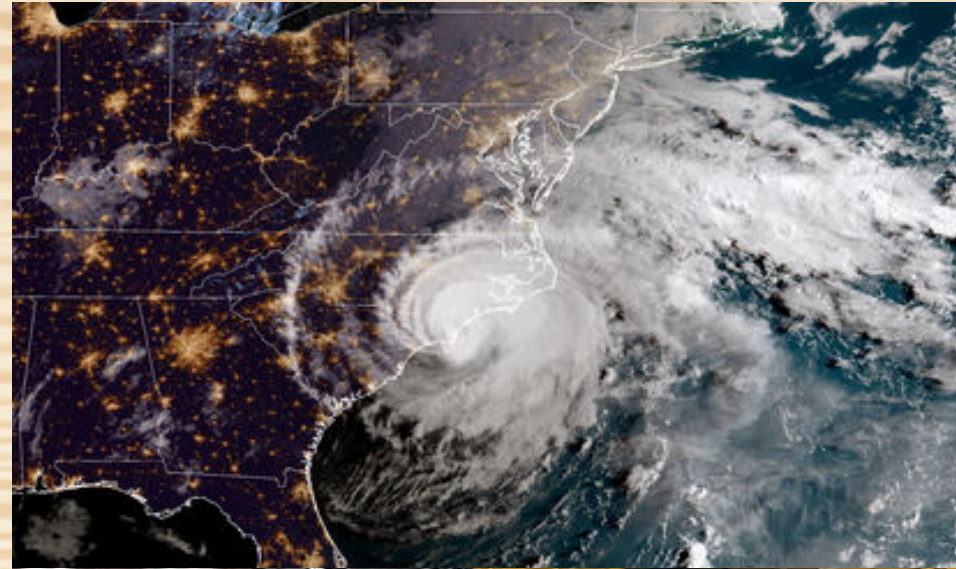
- Burning ban
- Round-the-clock staffing at SEOC
- LE & Aviation assisted with lane reversals and reconnaissance
- Chainsaw strike teams
- Incident management team deployed 3 times

## ASSESSMENT

- Began assessing damage after storm by air, by ground and by consultation with foresters, loggers, mills, etc.

## DAMAGE/IMPACTS

- Timber damage/loss very minimal
- Flooding major issue, causing damage mostly to infrastructure
- Seedling mortality very minimal
- Downtime at mills





# SCFC/ARBORGEN PARTNERSHIP

Public/private partnership with ArborGen to deliver advanced-genetics seedlings to timberland owners:

- ↑ production (30 million seedlings)
- Greater selection of seedlings
- Retains SC genetics
- Enhanced customer service
- Discounts for SC landowners

**Release**  
from the South Carolina Forestry Commission

FOR IMMEDIATE RELEASE:  
Tuesday, Feb. 27, 2018

CONTACT:  
Doug Wood, SCFC Director of Communications  
(803) 968-1576 | [DWood@scfc.gov](mailto:DWood@scfc.gov)

**SCFC unites with ArborGen on Taylor Nursery reboot**  
*Customers to see infrastructure improvements, increased production at the agency's tree nursery*

TRENTON, S.C.—The South Carolina Forestry Commission has entered into a partnership with commercial forestry seedling provider ArborGen, which will provide management services to operate the agency's 60-year-old tree nursery in Edgefield County.

The collaboration represents a unique public-private partnership in which ArborGen will use Taylor Nursery as a production facility for its portfolio of seedling genetics while the Commission will retain ownership of the property. As part of the arrangement, ArborGen will also make a substantial investment in modernizing the nursery's equipment and infrastructure, including irrigation systems, storage coolers, and seeding and harvesting equipment.

The facility and its seedlings will undergo a co-branding effort as part of the deal, and the Forestry Commission will determine seedling production to receive discounts on orders up to 100,000 seedlings.

"We're very excited about this association with ArborGen, which is known globally as a leader in the research, development and delivery of advanced-genetic seedlings," said SCFC Resource Development Director Tim Adams. "In addition to expanding seedling production through capital improvements, this partnership will also strengthen service delivery and long-term viability of the Forestry Commission's nursery and tree improvement program."

ArborGen will assume responsibility for operation of Taylor Nursery effective April 1, 2018.

###

**The South Carolina Forestry Commission**  
*In addition to being recreational hotspots for hiking, biking, hunting, camping and horseback riding, forests for ecological responsibility and productivity. The state's second-largest manufacturing sector generates a \$21 billion impact on South Carolina's economy. For more information, please visit [www.scfc.gov](http://www.scfc.gov).*

**ArborGen**  
*ArborGen is a leading provider of advanced genetic seedlings for the forestry industry. The company is headquartered in Edgefield, S.C. and has a presence in several other states. For more information, please visit [www.arborgen.com](http://www.arborgen.com).*

Taylor Nursery's customers stand to benefit most from the partnership between the Forestry Commission and ArborGen. Not only will landowners see increased production and greater selection variety, but also enhanced customer service.

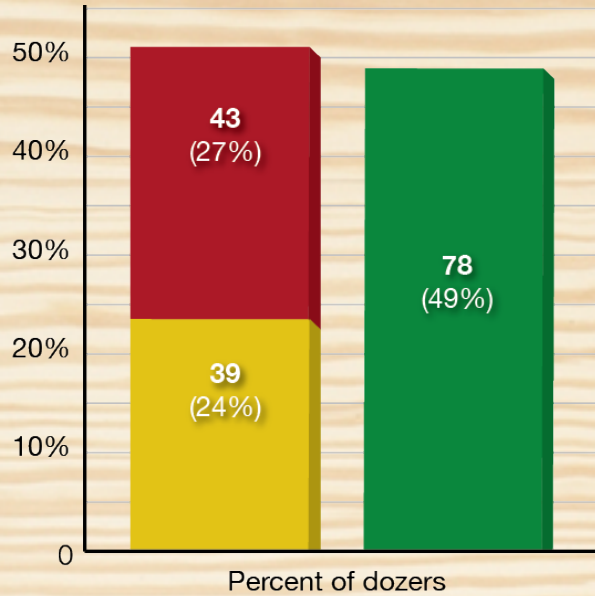


# SCFC JOINS NCSU TREE IMPROVEMENT CO-OP

As a full member of the cooperative, we again have access to loblolly pine germplasm that is needed for establishment of future orchards.



# SAFETY IS PRIORITY #1



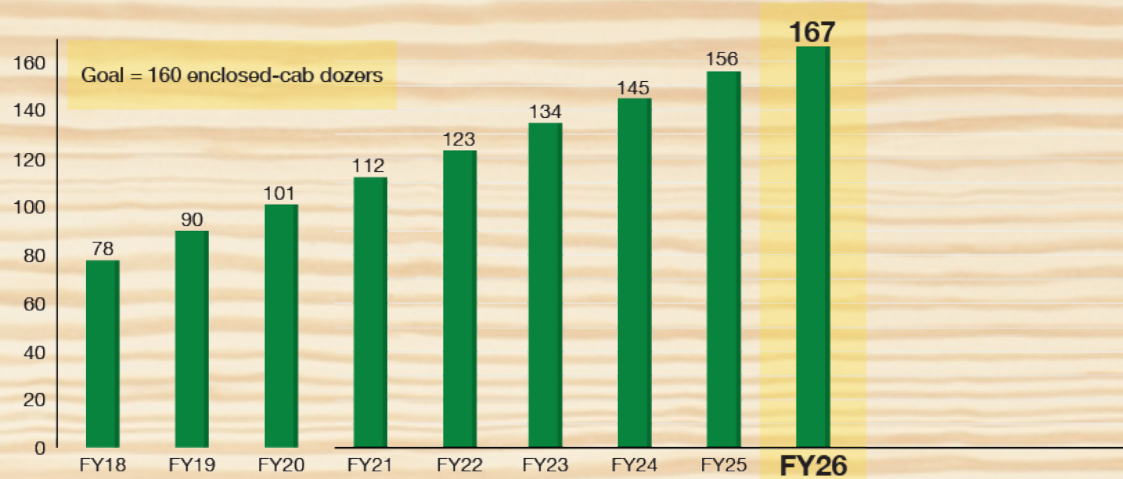
## SCFC Firefighting Dozers, By Service Life Category FY2018

- 43 open-cab dozers exceeding 15-year service life
- 39 open-cab dozers within 15-year service life
- 78 enclosed-cab dozers within 15-year service life

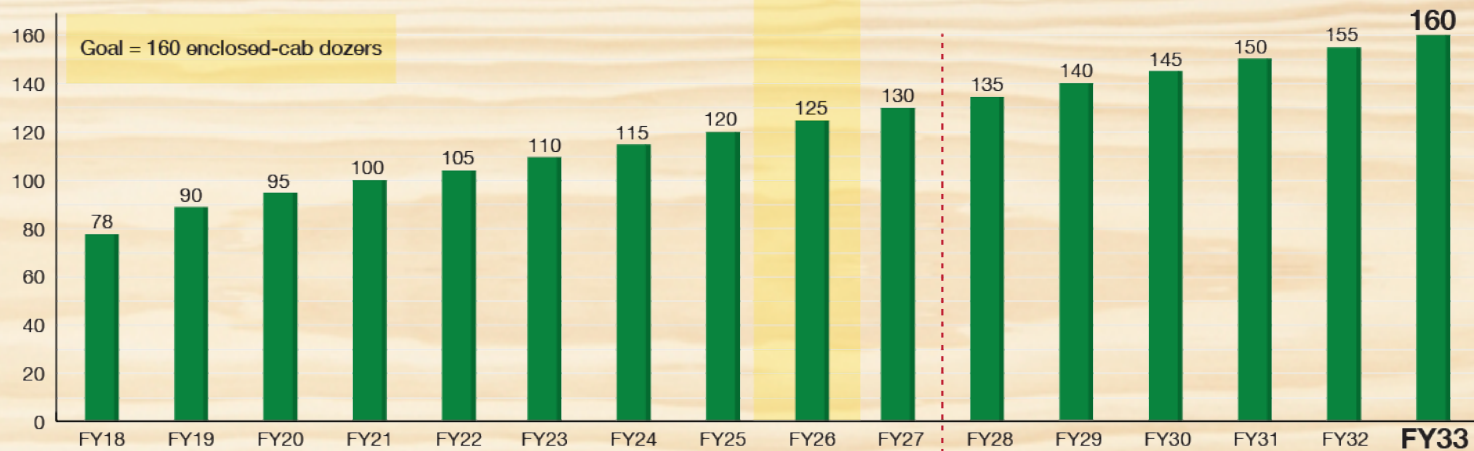


# SAFETY IS PRIORITY #1

Projected # Of Enclosed-Cab Dozers With Act 273 Funding + \$2 Million In Recurring Funds



Projected # Of Enclosed-Cab Dozers With Act 273 Funding Only



End of 15-year service life of first enclosed-cab models received in 2012



# SERVING THE FORESTRY COMMUNITY

